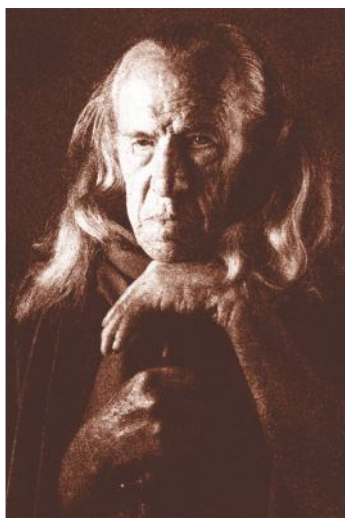


This is an easy low skill level tutorial which should teach you multiple Photoshop skills including:

- multiple layers
- layer masks
- filters
- and imagination

As photography this tutorial is a little contrived but a gem for wedding album covers etc.

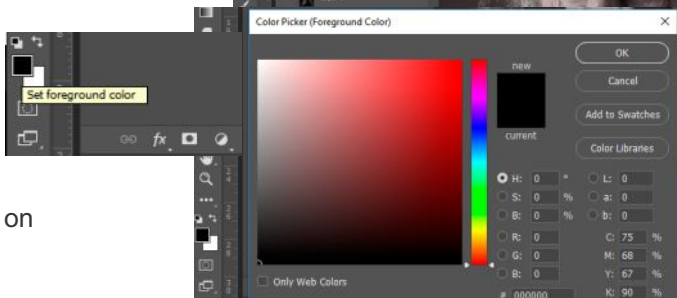
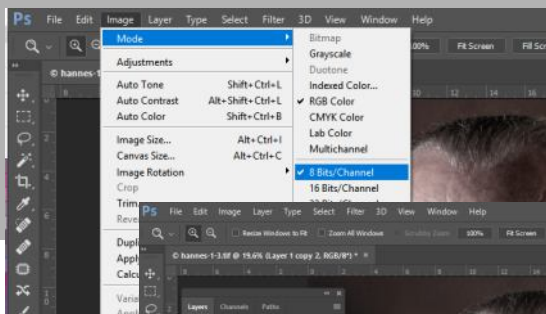


Photos and tutorial: Hein Waschefort

step 1

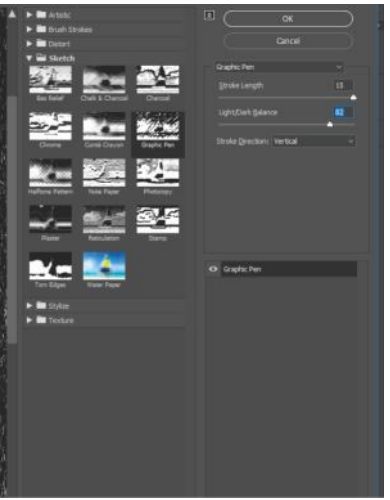
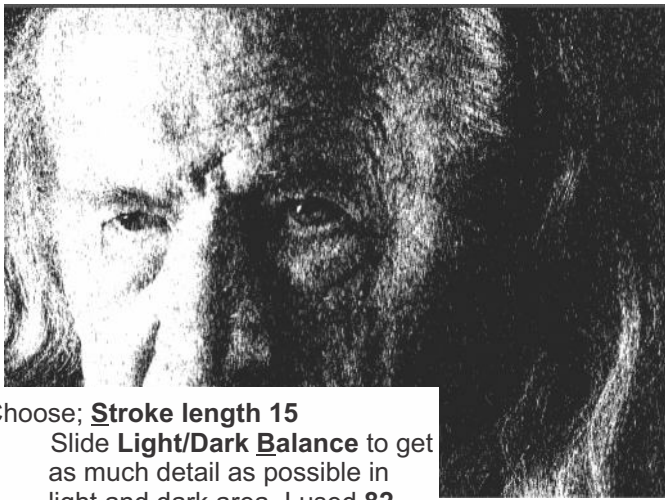
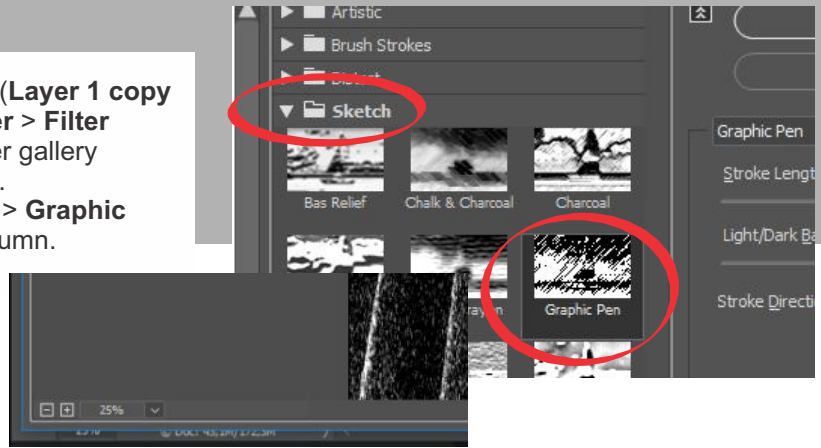
Choose an image with a good contrast range. I chose an old character portrait to create an Albrecht Dürer feel. A portrait of a young woman (bride) is also an excellent option and could associate with some of Da Vinci's sketches, as can be seen with Christine's manipulation on p.61

- Make sure image is converted to an 8 bit RGB file. An image size of between 30 and 40 meg will work well.
- Hit **Ctrl + J** 3 times to create 3 new layers
- Double click on **Set foreground colour** almost at bottom of toolbox bar on left select black by moving cursor to utmost bottom left position on colour block, hit **OK**.



## step ②

- Select top layer (**Layer 1 copy 2**) and go to **Filter > Filter Gallery...** the filter gallery window will open.
- Choose **Sketch > Graphic Pen** in option column.
- Click the - (minus) block at bottom of preview screen for a full view of image.

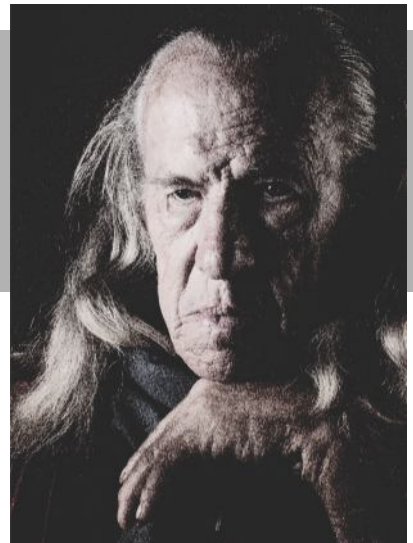
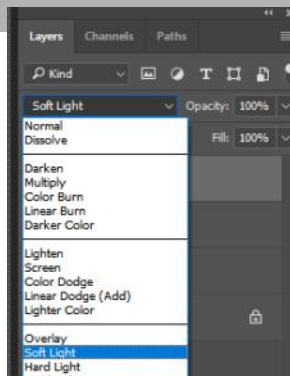


- Choose; **Stroke length 15**  
Slide **Light/Dark Balance** to get as much detail as possible in light and dark area, I used **82**  
**Stroke Direction: Vertical**  
Hit **OK**

## step ③

### Optional final step

- Click on **Normal** at top left of **Layers** box and choose **Soft Light** in Drop down menu.
- Right click on Layer (**Layer 1 copy 2**) and click on **flatten Image** for a nicely textured portrait.



## step 4

### Ignore step 3

- in **LAYERS** click on eye next to **Layer 1 copy 2** (top layer) eye will disappear. to close view of layer and select **Layer 1 copy 1**
- Double click on **Set foreground colour** almost at bottom of toolbox bar on left select a brownish colour, I chose **R: 137 - G: 91 - B: 66**, hit **OK**.
- Choose **Sketch > Graphic Pen** in option column again, previous settings will display. Click the - (minus) block at bottom of preview screen for a full view of image.
- Choose; **Stroke length 15**

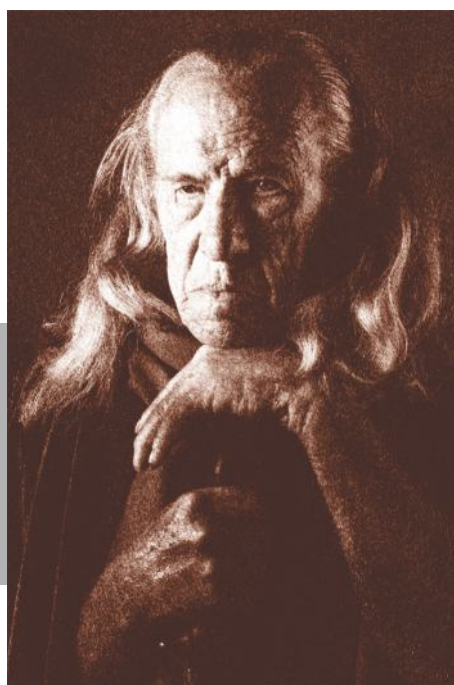
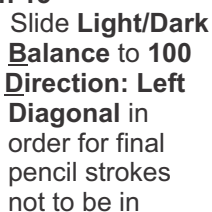
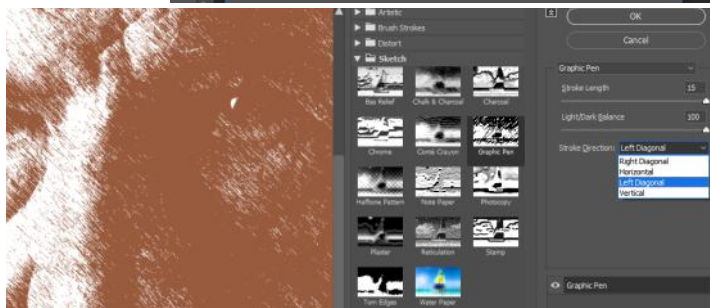
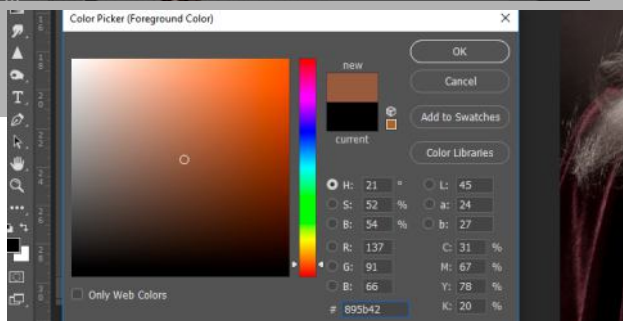
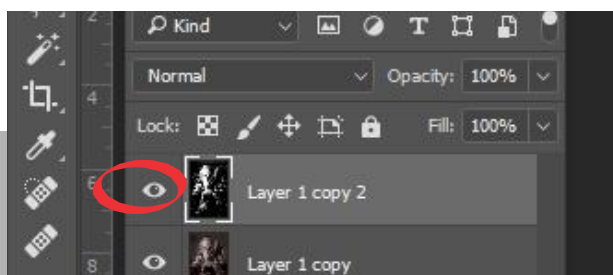
Slide **Light/Dark Balance** to **100**

**Stroke Direction: Left Diagonal** in order for final pencil strokes not to be

exactly the same direction which will look unnatural.

Hit **OK**.

- Select **Layer 1 copy 2** (top layer) click in eye box for eye to appear and layer will be visible again.
- Click on **Normal** at top left of **Layers** box and choose **Soft Light** in Drop down menu.



## step 5

### Next optional final step

- Right click on Layer (Layer 1 copy 2) and click on flatten Image for a nicely sketch/etch portrait.

step 6

Final touches for me was to gamma and lighten exposure of 2nd layer (actual/original photo). Selectively erase parts of top layer with an opacity of around 30%, and then burn shadows for more depth and dramatic look.

This manipulation brings back a more of a 'photo' (continuous look) making the work a little less contrived (I think).



Christine Waschefort's portrait of Marna, rendered in the fashion of this tutorial, gave it values similar to that of renaissance artists such as Da Vinci. This is a great option for a wedding album cover etc.



Leonardo da Vinci -  
Head of a Young Woman  
with Tousled Hair or,  
Leda

